



Science News

Share Blog Cite

Print Email Bookmark

Adult Survivors Of Childhood Leukemia Have Lower Bone Mineral Density, Study Finds

ScienceDaily (Dec. 5, 2008) — Men who survived childhood leukemia treatment into adulthood were more likely to have low bone mineral density than other adults their age, putting them at risk of osteoporosis and bone fractures, according to a new study.

See also:

Health & Medicine

- Osteoporosis
- Leukemia
- Women's Health
- Menopause
- Bone and Spine
- Diseases and Conditions

Reference

- Osteoporosis
- Human skeleton
- Bone age
- Bone

mineral density, a condition known as osteopenia. In this study, published Dec. 1 in the journal Cancer, 36 percent of men and 16 percent of women had low bone mineral density.

"Evaluations of bone health in childhood cancer survivors have only recently been noted as a concern. Routine monitoring has not yet become the standard of care for all survivors. Studies such as this one stress the importance of monitoring for bone health in these survivors, particularly since there may be some simple interventions, such as vitamin D and calcium, that may be beneficial," says study lead author Inas Thomas, M.D., an endocrinology fellow in the Department of Pediatrics at the U-M Medical School.

Low bone mineral density can progress to osteoporosis, a bone disorder common in older adults that can lead to fractures.

The researchers found that male survivors were more likely than female survivors to have lower bone mineral density, and shorter men and women were also more likely to have weaker bones.

The researchers also looked at levels of growth hormones, which are known to be affected by leukemia treatment. Low growth hormone levels and low levels of another hormone called IGF-1 can contribute to poor bone health, but that they are not the only factors involved. The researchers believe the disease itself or the treatments such as radiation — particularly radiation to the brain — and chemotherapy may affect bone growth.

"Survivors with known growth hormone deficiency or insufficiency should definitely be screened, but we would argue that all adult survivors should be screened as well. The disease, chemotherapy and cranial radiation — even if they do not lead to growth hormone deficiency — may play a role in the development of osteopenia or osteoporosis," Thomas says.

Leukemia statistics: 5,240 Americans will be diagnosed with acute lymphoblastic leukemia this year and 1,460 will die from the disease, according to the American Cancer Society

Additional authors: Janet E. Donohue, M.P.H., U-M Department of Pediatrics; Kirsten K. Ness, Ph.D., St. Jude Children's Research Hospital; Donald R. Dengel, Ph.D., University of Minnesota; K. Scott Baker, M.D., M.S., University of Minnesota

Funding: National Institutes of Health

Journal reference:

- Gurney et al. **Bone mineral density in young adult survivors of acute lymphoblastic leukemia.** *Cancer*, 2008; 113 (11): 3248-3256

Adapted from materials provided by University of Michigan Health System.

Email or share this story: BOOKMARK

Need to cite this story in your essay, paper, or report? Use one of the following formats:

J: APA
 J: MLA

Search ScienceDaily

Number of stories in archives: 44,032

Find with keyword(s): Search

Enter a keyword or phrase to search ScienceDaily's archives for related news topics, the latest news stories, reference articles, science videos, images, and books.

Related Stories

Calcium Supplements Fail To Prevent Bone Fractures In Children (Oct. 1, 2006) — Calcium supplements have very little benefit for preventing fractures in childhood and later adulthood, concludes a study in the British Medical ... > read more

Hip Bone Density Helps Predict Breast Cancer Risk (July 28, 2008) — Bone density provides information that may help more accurately determine the risk of developing breast ... > read more

Older Men With Parkinson's Disease At Increased Risk Of Bone Fractures (Oct. 12, 2005) — Researchers found that Parkinson's disease (PD) in older men is associated with lower bone mineral density and suggested that physicians should consider screening older male patients with PD for ... > read more

Chronic Kidney Disease Should Not Prevent Women From Taking The Osteoporosis Drug Raloxifene, Study Suggests (Apr. 9, 2008) — The osteoporosis drug raloxifene increases bone mineral density and reduces the risk of vertebral fractures among postmenopausal women with mild to moderate chronic kidney disease, according to a new ... > read more

Estrogen Is Important For Bone Health In Men As Well As Women (May 14, 2007) — Although women are four times more likely than men to develop osteoporosis, or porous bone, one in 12 men also suffer from the disease, which can lead to debilitating fractures. In women, low ... > read more

Just In:

Science Video News

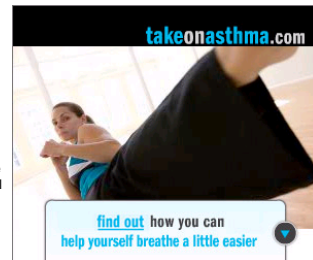
Prosthetic Bones
 A new kind of expandable bone prosthesis — implanted in the legs of pediatric patients to substitute bone that was removed due to cancer — is. ... > full story

Orthodontists Diagnose Sleep Apnea More Easily with X-Rays

Pediatric Cardiologists Show Hormone Therapy Reduces Cancer Treatment Side Effects

Forensic Scientists Improve DNA Analysis With Mummy-inspired Bone-baking

more science videos



Breaking News

... from NewsDaily.com

"Big Bang" collider repairs to cost up to \$29 million

China, Russia to send probes to Mars next year

Gene may open door for new sickle cell therapies

NASA delays robot Mars life-search mission

Climate history may explain empires' fall

more science news

In Other News ...

Politics on hold as Thais pray for ailing king

Fidel Castro says Cuba could talk with Obama

U.S. expects hard North Korea talks

U.S. says Mugabe's time is up

U.S. job losses awaited

Understanding but no consensus on auto bailout

India admits security lapses in Mumbai attacks

China and U.S. pledge cooperation after "robust" talks

more top news



Copyright Reuters 2008. See Restrictions.

Free Subscriptions

... from ScienceDaily

Get the latest science news with our free email newsletters, updated daily and weekly. Or view hourly updated newfeeds in your RSS reader:

- ▶ Email Newsletters
- ▶ RSS Newsfeeds

Feedback

... we want to hear from you!

Tell us what you think of the new ScienceDaily -- we welcome both positive and negative comments. Have any problems using the site? Questions?

Your Name:

Your Email:

Comments:

Click button to submit feedback:

Send It

[About This Site](#) | [Editorial Staff](#) | [Awards & Reviews](#) | [Contribute News](#) | [Advertise With Us](#) | [Privacy Policy](#) | [Terms of Use](#)
Copyright © 1995-2008 ScienceDaily LLC — All rights reserved — Contact: editor@sciencedaily.com